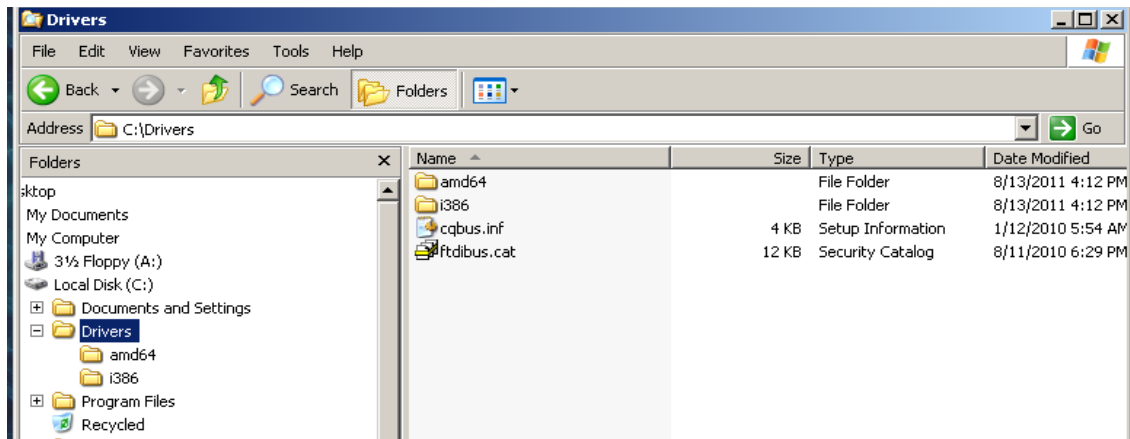


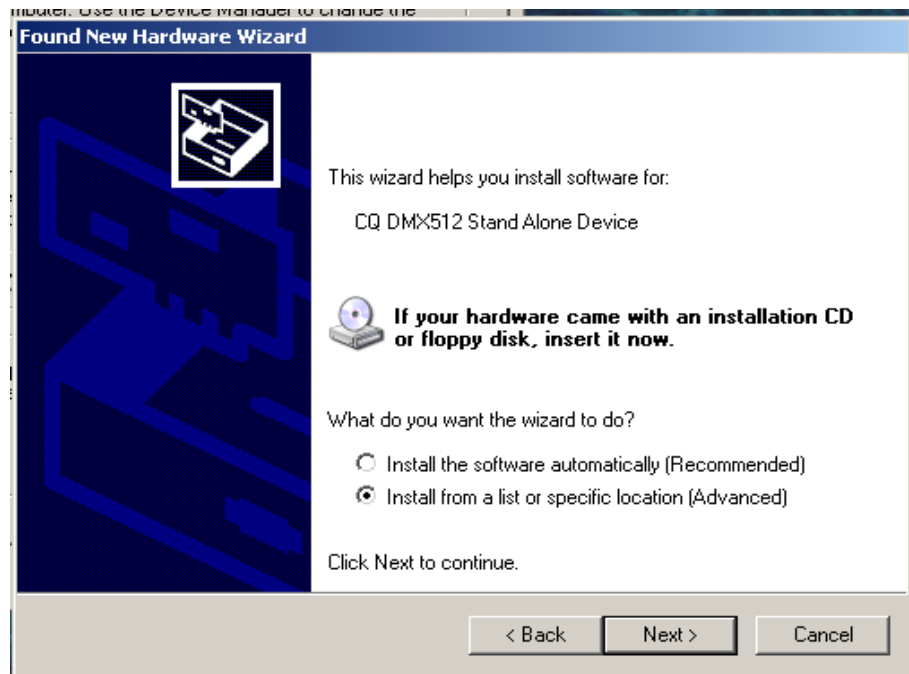
- 1) Unzip is driver to your C drive or start the Win_driver.exe to copy the driver on your C hard drive in the folder "Win DMX driver". It should look like this when correct.



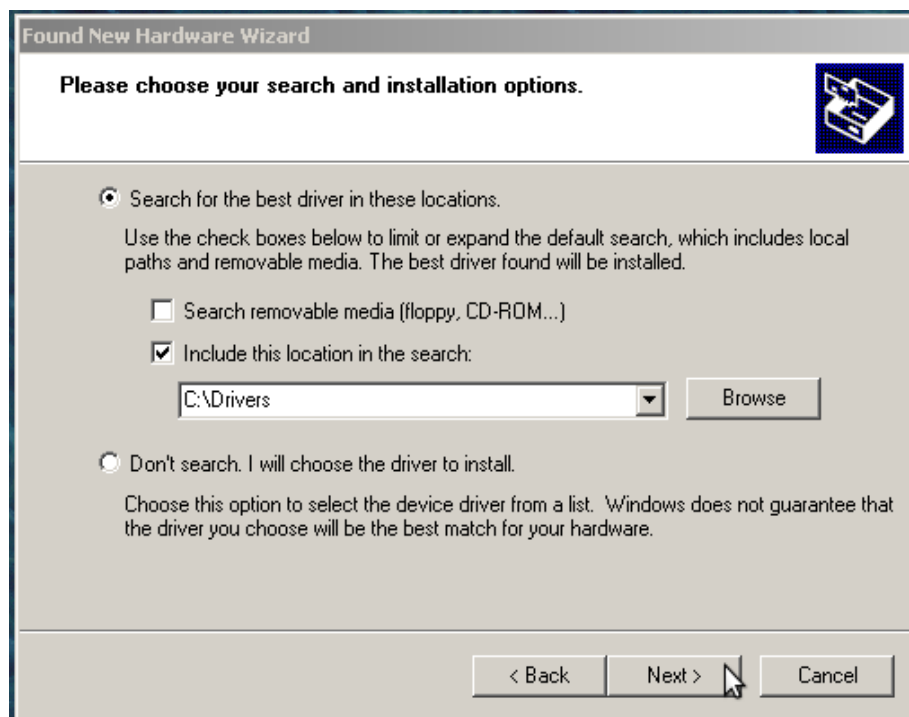
- 2) Plug in the interface.
- 3) Windows will ask to install the driver. On the first Window It will ask to search the Internet, click "No, Not this time". Click Next



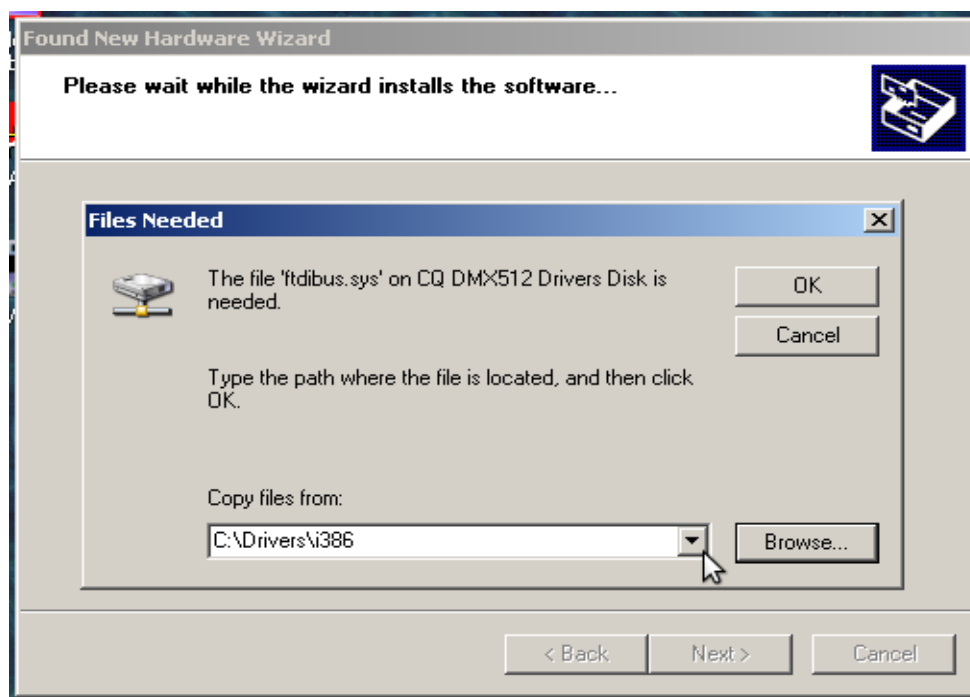
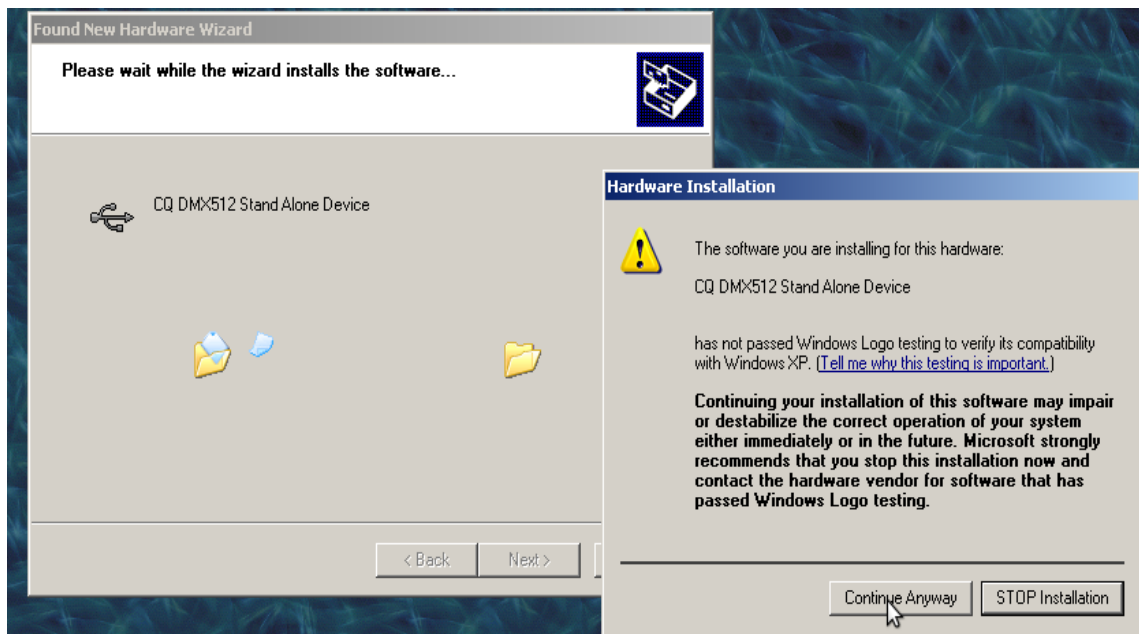
- 4) Next window click on "Install from a specified location (Advanced)". Click Next



- 5) Click the option to include a specified location in the search. Press the Browse button and point to the directory containing the cqbus.inf in it. Click Next



- 6) It should give you a security warning, then just click to "Install Anyways".



- 7) It asks for the location of the driver file ftdibus.sys, point it to the i386 directory under the main driver directory.
- 8) It should be finished and installed now.